



2025

The
book.

The Greeting

Table of Contents

Hello	2
Our House	3
2024 Impact	5
Corporate Social Responsibility	7
Wings & Wheels Lincoln	9
Wings & Wheels Omaha	11
Sporting Clays	13
Additional Event Support	15
Our Programs	17
The Tree House	19
Around the House	21
Sustain Our Mission	23
Meals that Heal	25
Our Cookbook	27
Pop Tabs	28
League of Extraordinary Givers	29
Community Involvement	31
Bloody Mary Fest	33
Blackstone Open	34
Volunteering	35
Gifts in Kind	37
Other Ways to Give	39
Our Leadership	41
Board of Directors	42



HELLO

It's been said that it takes a village to raise a child. Well, if that's the case, the Ronald McDonald House must be the most heartwarming, bustling, and—dare I say—well-fed village around! Over the past year, we've continued to grow, laugh, and work together to create a space where families in crisis can find comfort, community, and most importantly, hope.

You might have heard whispers (or perhaps joyous shouts) about our latest addition, the Tree House, a haven for hope and healing designed for local families to enjoy after any pediatric medical interaction. This vibrant, nature-inspired space isn't just a new physical structure; it's a symbol of how we're branching out—pun intended. It's designed to provide a unique healing environment for families to recharge and reconnect, with plenty of nooks for kids to explore and parents to exhale. It's quickly become a community hub where connection is key and whanaungatanga is quite literally written into the space (stop by and we'll tell you what in the world that means).

But it's not just about the spaces we build—it's about the spirit within them. From the warm meals prepared by volunteers to the bedtime stories shared by siblings, our House is more than bricks and mortar; it's a sanctuary powered by love, resilience, and occasionally a little bit of chaos (the fun kind!).

Speaking of dynamics, let's talk about our incredible team. Inside these walls, you'll find a team culture that's as colorful and engaging as the families we serve. We're constantly innovating and evolving, whether it's creating new family programs, developing partnerships, or just trying to figure out how to make a 10-foot balloon arch stay upright for an event (spoiler alert: teamwork and muscle, lots of muscle). We believe that when our internal culture thrives, we can best serve the families who walk through our doors.

So, as you look through this catalogue of events, please know that every page represents an opportunity to connect, to support, and to celebrate the work we're all doing together. Whether you're a long-time friend of the House or a newcomer to our mission, we invite you to get involved, stay curious, and maybe share a laugh while we do something bigger than ourselves.

Thank you for being part of our extended family.

With gratitude and a big toothy smile,

Lindsey Rai Kortan, CEO, Ronald McDonald House

Our House

Ronald McDonald House Charities in Omaha (RMHC) provides the essential elements of home.



Griggs family
Gentry, AR

108 days at
the house

Scan to read Ethan's story



A FEW OF OUR AMAZING HEALTHCARE PARTNERS:

Our home includes warm beds, hot showers, laundry facilities, transportation to and from the hospital, and regular nutritious meals to sick children and their families utilizing any of the area's world-class medical care providers.

To qualify for a stay through the House Program at Nebraska's only Ronald McDonald House:

- Family has a child, up to age 21, currently receiving treatment at any medical facility in the area.
- Family must live at least 35 miles from the House.

Our new Day Program located in **The Tree House** serves families in our Omaha **community** whose children have same day medical appointments. In this haven for healing, families will discover an array of amenities thoughtfully curated to enhance their well-being.



2024 Impact

Thank you for helping make the extraordinary ordinary!

Our community allowed us to serve more families than ever before, families like the Lucquetes.



Lucquete family photo

8589

Total number of nights provided for families at the House

1184

Total individuals served

372

Total number of families housed

28 days

Average length of stay

8 years old

Average patient age

56%

Of guests are from Nebraska and Iowa

Statistics from January 1, 2024 to October 31, 2024.

"I think we should surround ourselves with people who care... [who] could change the world every day. And we're in a place where you guys are literally doing just that."

Josh Lucquete

Read Neely's full story by scanning the code.



Songs and Celebrations: Finding Silver Linings

Neely's Story

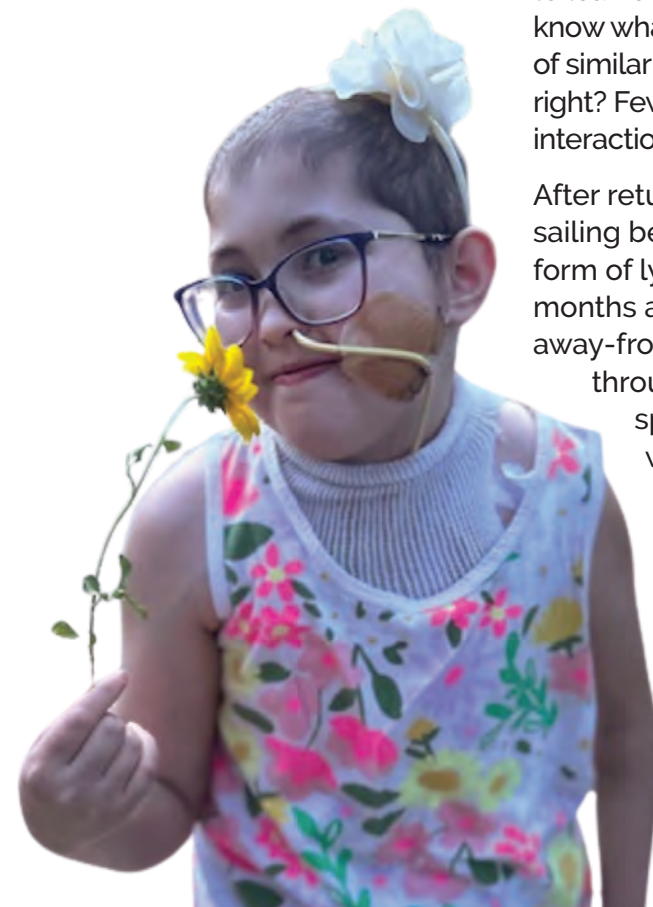
Neely Lucquete is the second-oldest of four children, living in Austin, Texas with her parents, Josh and Kathleen. Spend any amount of time with them, and you're bound to smile. They are a fun-loving, close-knit family, and Josh says, "We celebrate often."

Despite the fact they've had to spend months away from home. Despite Neely's condition requiring careful monitoring and precautionary steps before any activity. Despite how difficult it is to juggle the needs of six family members in the midst of a medical emergency for one. Josh says, "All that we really care about, honestly, is that we're okay. That we're together."

Neely was born more than a decade ago with Hirschsprung's disease, a condition that, essentially, prevents the digestive system from doing its job. While the Lucquetes were able to manage Neely's care for several years, eventually her condition deteriorated to the point of needing a multi-organ transplant, which she received in Omaha, Nebraska.

The transplant went well, and during Neely's recovery, the family stayed at the state's only Ronald McDonald House, where Josh says it was nice to be surrounded by people who understood their circumstances: "It creates an atmosphere for [House families] to lean on each other. We get contact information; we still want to know what's going on with people after they leave. There are a lot of similar kids here, but out in the world, they're like one in a million, right? Few and far between. This is a chance to have some real interaction with people who know things about this situation."

After returning to Texas, Neely had just two months of smooth sailing before requiring more care, this time for a post-transplant form of lymphoma. A life-flight to Omaha led to several more months away from home. Luckily, they once again had a home-away-from-home, at the Ronald McDonald House. Neely went through three rounds of chemotherapy, with her parents splitting their time between the hospital and the House, where they attempted to establish a sense of normalcy, whether that meant home-cooked lunches, trips to the park or zoo or museum between hospital visits, or any other activity that could serve as a silver lining to such a dark cloud. Josh notes, "We're very grateful and thankful there's a lot of times to celebrate." One such time: Neely being discharged from the hospital so the family could be together once again.



Corporate Social Responsibility

Be the impact

In our vibrant community, we foster essential partnerships through Corporate Social Responsibility initiatives at RMHC.

These partnerships extend beyond financial contributions, reflecting a shared dedication to supporting families in need. We're eager to showcase the meaningful impact of these collaborations as local businesses and RMHC come together to offer essential care and comfort during challenging times.

93%

of employees believe companies must lead with purpose.

77%

of employees believe most consumers are motivated to purchase from companies committed to making the world a better place.

58%

of organizations that currently have a strong and clear sense of purpose experienced 10% or more growth during the last three years.

Source: <https://online.hbs.edu/blog/post/corporate-social-responsibility-statistics>

Include RMHC in your business strategy:

EMPLOYEE VOLUNTEER OPPORTUNITIES Around the House, programming, or event volunteer opportunities.

FINANCIAL INVESTMENT Event sponsorship, matches, and grants.

IN-KIND SUPPORT Pantry items, household goods, auction and raffle items, professional items and services.

employee fundraising campaigns

Gather your co-workers to raise money for RMHC. Anything is possible and options are endless. You can even set up donations through payroll by contacting Give Nebraska. If your company matches employee gifts, you can double the impact.

showing our love

We express deep appreciation through various avenues, including The Book, our website, events, presentations, social media, and so much more.



Ready to make an **impact?**

Contact Emily Mozer at emozer@rmhcomaha.org or 402-346-9377 ext. 125.



Security Equipment, Inc. is providing dinner through our Meals That Heal program



Green Plains regularly sends volunteer teams to lend a hand with various tasks around the house



JE Dunn, Lunch Sponsor of Sporting Clays Tournament



Harrison Financial Services donated outdoor toys and games, along with blankets and snacks for the families



Prime Secured hosted a Lunch & Learn to get connected to RMHC

Wings & Wheels Lincoln

title sponsor • \$20,000

- Three tables of ten guests each
- Opportunity to speak during event program
- Brand recognition in the following areas:
 - Logo on step and repeat
 - Prominent logo placement during event presentation
 - RMHC event web page
 - Dedicated social media post for your company
 - Event signage

premier sponsor • \$10,000

- Two tables of ten guests each
- Brand recognition in the following areas:
 - Logo on step and repeat
 - RMHC event web page
 - Dedicated social media post for your company
 - Event signage

vip sponsor • \$7,500

- Two tables of ten guests each
- Brand recognition in the following areas:
 - RMHC event web page
 - Dedicated social media post for your company
 - Event signage

wings & wheels sponsor • \$3,000

- One table of ten guests
- Brand recognition in the following areas:
 - RMHC event web page
 - Mention in RMHC social media post
 - Event signage

table sponsor • \$1,200

- One table of ten guests
- Branding on event signage

individual ticket • \$120

Friday, May 30th, 2025
Silverhawk Aviation
Lincoln, NE 6:00p.m.

Join us for an exclusive night of luxury featuring exotic cars and stunning aircraft inside Atlantic Aviation's private airplane hangar. Enjoy gourmet small bites, craft cocktails, live entertainment, and an exciting live auction—all in one extraordinary setting!



1973 Mercedes 450 SL
courtesy of Brian Klintworth



Maggie Paulson



Rita Hughes, Olivia Hughes, and Tim Hughes

"Wings & Wheels was a heartwarming success thanks to our incredible community. Your generous donations of time, energy, planes, and cars made a difference. Together, we can raise more awareness for Nebraska's only Ronald McDonald House!"

Peg & David Slagle



Brooke and Bic



Stonebrook Exterior



Dave and Peg Slagle, Experience Chairs



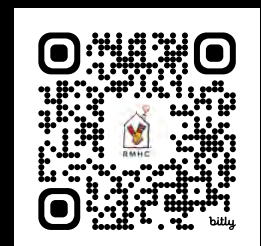
John & Kelsey Geary



Union Bank & Trust

scan to register & learn more

For questions, please contact:
 Emily Swett
 eswett@rmhcomaha.org
 402-346-9377 ext. 126.



Wings & Wheels Omaha

title sponsor • \$25,000

- Three tables of ten guests each
- Opportunity to speak during event program
- Brand recognition in the following areas:
 - Logo on step and repeat
 - Prominent logo placement during event presentation
 - RMHC event web page
 - Dedicated social media post for your company
 - Event signage

premier sponsor • \$10,000

- Two tables of ten guests each
- Brand recognition in the following areas:
 - Logo on step and repeat
 - RMHC event web page
 - Dedicated social media post for your company
 - Event signage

vip sponsor • \$7,500

- Two tables of ten guests each
- Brand recognition in the following areas:
 - RMHC event web page
 - Dedicated social media post for your company
 - Event signage

wings & wheels sponsor • \$3,000

- One table of ten guests
- Brand recognition in the following areas:
 - RMHC event web page
 - Mention in RMHC social media post
 - Event signage

table sponsor • \$1,200

- One table of ten guests
- Branding on event signage

individual ticket • \$120

**Friday, Sept 12th, 2025
Signature Aviation
Omaha, NE | 6:00p.m.**

Join us for a one-of-a-kind evening hosted by Signature Aviation where luxury takes flight. Explore exotic cars and magnificent aircraft in the stunning backdrop of a private airplane hangar. Indulge in gourmet small bites, sip on craft cocktails, enjoy live entertainment, and experience the thrill of an exclusive live auction—all in an unforgettable setting!



Amazing music from Downtown Collective



2016 McLaren 675LT Spider displayed by Dr. Max Chiu



Heather McCulley wins the Heads or Tails Booze Wagon

"This is one of the more unique fundraisers I have attended and it's a wonderful interaction for a great cause. We are thankful for the partnership FNBO has with RMHC."

Kevin Thompson



Ryan James



Private plane displayed by anonymous donor



Shaun and Carly Speranza



Dr. David Mercer

**scan to register
& learn more**

For questions, please contact:
Emily Swett
eswett@rmhcomaha.org
402-346-9377 ext. 126.



"This is not only a fantastic team-building experience and a lot of fun, but also a meaningful chance to give back and make a positive impact in the community."

Tim McGill, pictured with wife, Jodi



ThunderCats



Van Meter Inc. with Concordia student athlete volunteer



CLAAS of America



Rob Randels, Lindsey Rai Kortan, and Jeff Moberg

Kids & Clays

Sporting Clays Tournament

title sponsor • \$15,000

- Entries for five teams of five shooters each, including the Friday VIP Shoot & on-course side games
- Opportunity to speak during VIP event program
- Brand recognition in the following areas:
 - Full-page ad in event program
 - Mention in event press release
 - RMHC event web page
 - Dedicated social media post for your company
 - Event signage, including station sign

flurry sponsor • \$8,000

- Entries for four teams of five shooters each, including the Friday VIP Shoot & on-course side games
- Brand recognition in the following areas:
 - Half-page ad in event program
 - RMHC event web page
 - Dedicated social media post for your company
 - Event signage, including station sign

lunch sponsor • \$6,000

- Entries for three teams of five shooters each, including on-course side games
- Brand recognition in the following areas:
 - Half-page ad in event program
 - RMHC event web page
 - Dedicated social media post for your company
 - Event signage, including station sign

gold sponsor • \$3,500

- Entries for two teams of five shooters each, including on-course side games
- Brand recognition in the following areas:
 - Listing in event program
 - RMHC event web page
 - Event signage, including station sign

team • \$1,250

- Entry for one team of five shooters & on-course games

station sponsor • \$500

- One station sign on course

October 2025
Oak Creek
Sporting Club
Brainard, NE

Our Kids & Clays Sporting Clays Tournament is held annually at Oak Creek Sporting Club in Brainard, Nebraska, and it's an excellent chance to show appreciation for your clients and employees. Each team competes at ten stations for a total of 100 shots. You can also play entertaining side games, participate in the silent auction, and enjoy a delicious lunch.



Lindsey Rai Kortan with McGill Restoration



scan to register & learn more

For questions, please contact:
 Emily Swett
 eswett@rmhcomaha.org
 402-346-9377 ext. 126.

European Pheasant Hunt

\$200 per hunter – 30 spaces available per day!
 European Hunts guarantee a shot at hundreds of pheasants. These hunts feature 12 stations on a circular course. The birds are released from an area of dense cover. Shooters rotate around the course, giving equal opportunity to all. This hunt can also be used as the perfect way for businesses to entertain clients or for a group of friends to have a blast!

Additional Event Support



Silverhawk Aviation

Raffle & Auction Items

All of our events include a variety of raffle and auction items to help us raise funds for the House. Please contact us if you have an item or service you would like to contribute to an event.



Jan Sheridan—Heads or Tails winner at Wings & Wheels Lincoln



Wings & Wheels Lincoln Committee

Raise the Paddle Support

An important portion of our program during our annual galas, Raise the Paddle provides opportunities for individuals to give to the House. A matching gift is an exceptional way to encourage all of these event attendees to donate.



Jeff and Keri Francis

Event Volunteers & Committees

Event committees assist with all aspects of planning our signature events. Meetings are scheduled with members' work schedules in mind.



Charles Schwab Volunteers helping set up for Wings & Wheels Omaha

Vendor Support

Local vendors such as restaurants, rental companies, and more all help make our events successful.



Elegant Edge Catering



Josh Galvin and Lisa Wassenberg



Magnolia Hotel Omaha



Isabella is riding Santiago while Lilliana helps lead the horse. Horses Help staff, Megan Denny, in the front, and Carter Crispin in the back.

Our Programs

Here are a few examples of various local organizations, each specializing in different aspects of well-being.

Simon Says: Live a Better Life

visits RMHC on a monthly basis to throw a birthday party celebrating all the children.

Completely KIDS

offers curriculum-based programming for children who experience large gaps in education due to illness.

Capitol Beauty School & Independent hairstylists

provide haircuts in our House salon for an overall feeling of well-being to our families.

Omaha Community Playhouse

engages children in writing, storytelling, acting, and imaginative play during their visits.

Option Care Home Health

delivers cutting-edge infusion medications, nursing support, and seamless transitional care for patients.

Horses Help SWI

provides equine-assisted therapeutic services in a safe and inclusive environment for individuals with physical, cognitive, emotional, or social challenges.

Here For You For Them

equips families with mindful parenting tools, yoga, and breathing exercises to manage stress and build resilience.

Saving Grace Perishable Food Rescue

connects excess perishable food from local food purveyors to help feed our families.

Project Sunshine

brings Creighton University student volunteers weekly, spreading joy through arts, crafts, and a sense of normalcy.

RMHC is committed to making a lasting impact on the health outcomes of the families we serve, and at the heart of this endeavor lies collaboration. To provide comprehensive support services, RMHC collaborates with various local organizations, each focusing on unique areas of well-being.

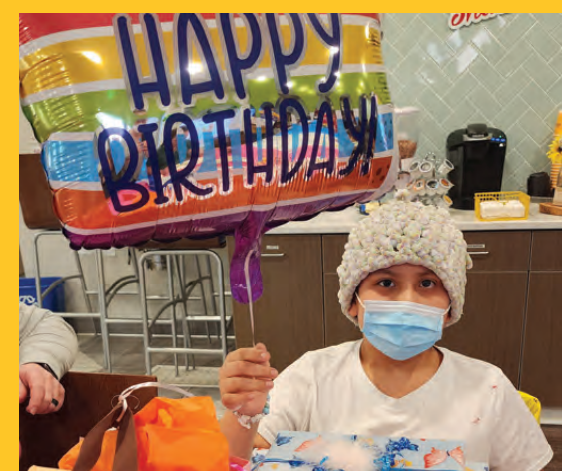
scan to learn more



Anita, her grandson Daniel, Tristan and his mom, Ashley, enjoy Dream Night at the Omaha Zoo



Emily, an instructor at Capitol Beauty School, shown with some of her students



Kurbe celebrating her birthday with Simon Says: Live a Better Life



Healthy Café



Exercise Room



Sleeping Room

The Tree House is a place where Omaha families find support through our Day Program.

Open Monday through Friday, 8am-5pm, our Day Program is for anyone with a pediatric or maternal health appointment, and their families. Guests simply show proof of same-day appointment for access to the amenities inside The Tree House:

Exercise Room: Parents can keep an eye on their kids while working out.

Healthy Café: Guests can grab a nutritious snack during their stay at The Tree House.

Sleeping Room: Comfy private room for a quick nap to recharge and relax with space for the whole family.

Gaming Corner: Video games, board games, and card games galore.

Kids Play Area: Roller coaster, bumper cars, toy kitchen, and more.

Office Space: Available if guests need to have a meeting or get some work done.



Sisters, Piper and Jemma (age 4 and 2)

For more information, or to schedule a tour, contact Maceal Pechacek at mpechacek@rmhcomaha.org or 402-346-9377 ext. 135.





Play Room



Living Room



Kitchen and Dining Rooms



Beauty Salon



Front Yard Play Area



Toy Room



Family Guest Room



Sensory Room

Sustain Our Mission

You become an integral part of enhancing our mission's enduring impact by offering your support through any of the diverse opportunities at RMHC.



house fund

Our House must maintain an atmosphere of care, connection, and cleanliness. Your investment in the House Fund provides our families with living accommodations and family support services in an environment designed for hope and healing.

ANNUAL AVERAGE EXPENSES	
Utilities & TV	\$48,200
Technology	\$30,000
Hospital Grade Cleaning Services	\$50,000
Wrap Around Services	\$152,000



trail fund

The Trail is a loop of 0.25 miles with various stations along the path designed for a variety of experiences for our community. Support generated will supplement funding for the House Program and management of the trail.

tree house fund

Contributing to this fund provides a safe haven for local families whose children are receiving care at nearby hospitals. The Tree House features a nutritional cafe, sleeping room, office space for remote work, fitness room, play & gaming areas for all children, and meeting spaces for therapy sessions or tutoring.



"At Borsheims, we are incredibly proud to support The Tree House at the Ronald McDonald House. Contributing \$10,000 to this remarkable program is our way of giving back to a community that means so much to us. We believe in the power of community support to create a nurturing environment for families during challenging times."

Andrew Brabec,
Vice President of Marketing & Ecommerce, Borsheims

people fund

It takes a compassionate culture, built with dedicated individuals to sustain our mission. Our People Fund is budget-enhancing support for equitable wages to retain and develop talented, high-quality staff.



Vicky Sheeler, Chief Program Officer with Natalie, age 2



Mackenzie Leahy, Program Manager with Mason, age 2



Ready to invest? To explore all funding needs,
Contact Kari Ketcham at kketcham@rmhcomaha.org or 402-346-9377 ext. 128.

"Volunteering at RMHC is a wonderful opportunity to directly help people that are going through a scary and stressful time in their life. A good home-cooked meal at the end of their day is just a small way to provide some support while they deal with what is most certainly an all-consuming task of taking care of their child, for possibly long periods of time, and away from their normal support systems."

Jennifer White,
CQuence Health Group



*Nebraska Medicine Pediatric & PICU Staff.
"We absolutely love seeing our kids outside of the hospital!" - Brittany Freeman*

Meals that Heal



Help support the families staying in our House by providing Meals that Heal. Volunteers can prepare dinner or freezer meals in our on-site House kitchen or coordinate a meal delivery, offering comfort and connection during challenging times.



8381 meals served

*Statistic from January 1, 2024
to November 22, 2024.*

*Pure Infusion Suites made freezer meals
for us to serve on open dinner nights*

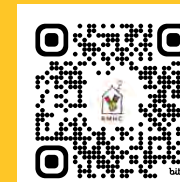


UNO Delta Chi Fraternity brothers love to work the grill to make hamburgers and hot dogs for our families



Cargill Branded Feed

To sign up to volunteer or ask questions, please contact Alyssa Francis at afrancis@rmhcomaha.org or call 402-346-9377 ext 122.



Simon Says: Live a Better Life throws monthly birthday parties for kids and family members staying at the House



Nebraska Health Network served Meals that Heal at Methodist Women's Hospital

Meals that Heal at Methodist:

Beyond the walls of our House, the Meals that Heal program at Methodist Women's Hospital offers warm meals and creates additional support networks for our families, including those receiving care in the NICU facility. You can help by providing lunch for these families by contacting Alyssa Francis at the email above.

Our Cookbook

Made with Love

Interested in cooking Meals that Heal but not sure what to include on your menu? Enjoy a few of our dinner groups' favorite recipes to cook for our families as inspiration.



White Chicken Chili Qquence Health Group

- 3 chicken breasts (about 1 lb.) cooked and shredded (you can substitute rotisserie chicken)
- 1 - 2 cloves garlic, minced
- ½ yellow onion, diced
- 2 cans Great Northern Beans (do not drain)
- ¾ - 1 tsp. oregano
- 1 can chicken broth
- 1 can Rotel tomatoes with chilis (I use hot)
- 8 oz. sour cream
- 8 oz. shredded Monterrey Jack cheese

Directions:

- Mix first seven ingredients in a stock pot, heat and simmer until onions are almost tender
- One hour before serving, reduce to low to medium-low heat, and add in sour cream and shredded cheese
- May garnish with Fritos or jalapeños



"I love the mission of the Ronald McDonald House Charities. Their goal to help families who are going through extreme challenges is delivered with sincere desire and compassion. Who wouldn't want to be a part of their mission! Thank you, Ronald McDonald House, for what you give to others and an opportunity to serve."

Patty Bauerle



No Bake Cookies

Patty & Friends

- 1 c. light corn syrup
- 1 c. sugar
- 1 ½ c. peanut butter
- 5 c. corn flakes

Directions:

- Over medium heat, bring syrup and sugar to a boil
- Add peanut butter and stir until well mixed
- Mix into corn flakes and stir until well coated
- Drop by spoonful onto wax paper
- Let cool until set

POP TABS

Pop tabs may be small in size, but they have a big impact. Your aluminum can tab donations help light the way for families at our House.

1. Collect pop tabs from the top of aluminum cans
2. Bring them to RMHC at 620 S 38th Avenue, Omaha, NE 68105
3. We recycle the tabs to help pay our electrical bill



Young Pop Tab donor with her latest donation



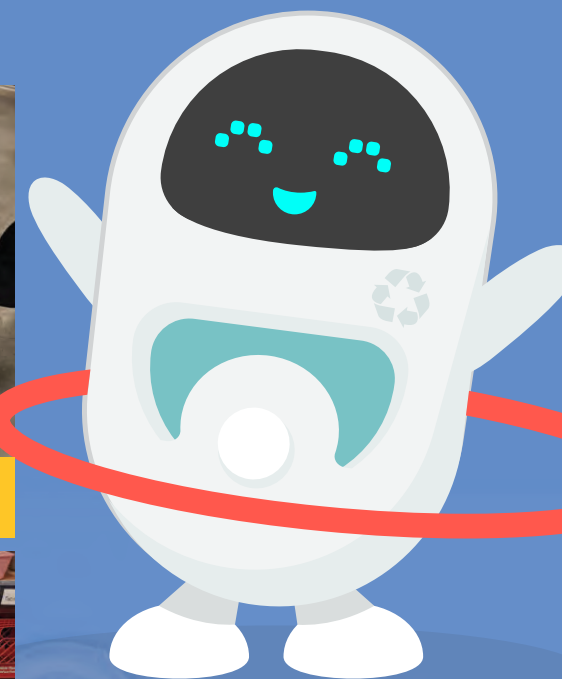
Cub Scout Pack 37



Pop Tab Volunteer with a large donation



Pop Tab Hero Jake Rivard



Meet our POP Star Ambassador
Tabbie Cando

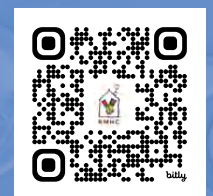
TAB POP FACTS

One pound of tabs is about
1,500 tabs

63,360 tabs end to end is a MILE... and a million tabs would stretch **16.75 miles!**

Collecting tabs also teaches kids about **recycling...** keeping our planet in tip-pop shape!

Scan the code to learn more:



Lora Coyne, weekly Pop Tab volunteer



League of Extraordinary Givers

Consider joining the League of Extraordinary Givers (LXG). By establishing a recurring monthly gift, you're giving our families the reliable support they need all year. When faced with extraordinary circumstances, it takes extraordinary givers to make things a little more ordinary.

LXG members donate at various levels to help families in whatever way they can:

\$10 per month supports a one-night stay for a family in a comfortable guest room

\$20 per month covers sanitation services, providing protection for families for three days

\$50 per month provides internet access for the entire House for a quarter of the year

In addition to joining the efforts of caring for families every month, LXG members will receive invitations to RMHC events and online recognition, if desired.

"When unpredicted challenges arise, the Ronald McDonald House is there to cushion the impact. Amidst life's uncertainties, families find a space where hope and resilience shine through, granting a touch of peace in their most pressing times."

**Ama Bikoko, CDC Foundation,
RMHC Board of Directors,
LXG Member**



scan to register & learn more

For questions, please contact:

Hunter Samuels at hsamuels@rmhcomaha.org

402-346-9377 ext. 124.



Kennedy,
North Carolina

83 days at
the House



Read Kennedy's story
by scanning below:



Community Involvement



Hurl the Pearl

When you attend Omaha Storm Chasers home games, play Hurl the Pearl. For just \$2 per ball, you have chances to win prizes, and all proceeds benefit the families staying at RMHC.



Lindsay Rai Kortan, Steve Leonard, and Nate Leonard accept a check from the Storm Chasers, presented by Martie Cordaro

Host a Fundraiser

Third-party fundraising events are essential to supporting RMHC's mission of providing a home-away-from-home for families with sick or injured children. We are grateful for individuals, organizations, and businesses interested in hosting events or donation drives on our behalf. **Your support makes a difference in the lives of families.** Examples include:

- Happy Hours
- Game Tournaments
- Networking Events
- Bake Sales
- Casual Dress Days
- Dunk Tanks
- Wine Tastings
- Golf Outings
- And many more ideas



72 Table & Tap



McDonald's local owner operators present a check to RMHC team



McDonald's Relationship

The first Ronald McDonald House opened in Philadelphia on October 15, 1974, providing care for families of sick children traveling for medical treatment. Since then, McDonald's corporate and local franchisees have supported Houses with volunteer hours, donations, promotions, and fundraising, including donation boxes in restaurants. Each Ronald McDonald House operates independently to address the unique needs of its community while benefiting from the shared mission of RMHC worldwide.



Round Up

Supporting RMHC is now easier than ever at your local McDonald's. Whether you're ordering at the front counter, drive-through, kiosk, or through the mobile app, simply choose to "Round-Up for RMHC". Your purchase will be rounded to the next dollar, the difference directly funds our mission. This option is available year-round and works with all payment methods.

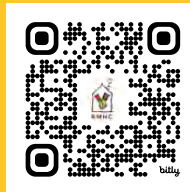


Bloody Mary Fest

Sunday, June 1, 2025 - Werner Park

Kick off your Sunday Funday at the Bloody Mary Fest, hosted by Omaha West Rotary Club. This exciting fundraiser gathers local restaurants and bars to compete for top honors in crafting the best Bloody Mary. Guests will judge entries while enjoying live music, raffle prizes, and more. All funds benefit the new RMHC backyard playground and outdoor kitchen.

Scan the code to learn more:



Join us for the Blackstone Open Saturday, August 9, 2025!

The Blackstone Open is a "hole" lot of fun—a mini putt-putt tournament throughout the Blackstone District benefiting RMHC.

- Dress in your best costume or golf attire—there is a prize for the best dressed
- Courses are located throughout the Blackstone District
- Meet back at Blackstone Social for awards and the after-party



Talus Spirits & Sustenance



Beyond Golf Bar + Kitchen



Jill Thomas, Michelle Schrage, Dan Lassek



Kari Ketcham, Martie Cordaro, Kaleb Duncan



Volunteering



Want to lend a helping hand?

We appreciate all the help we can get to make sure our House stays in tip-top shape for our families. Whether it's inside refreshing our kitchen and shared spaces, outside in our yard, or assisting with our events out in the community, we would love to have your support for our families.

Cross Med helped wash our windows to keep our seasonal house maintenance on track

Lead Volunteer, Jay Nelsen, pictured with Volunteer Coordinator, Alyssa Francis



Kindness Cherished

Jay Nelsen, our beloved Lead Volunteer, passed away in October 2024. Jay had a special way of making our House feel like a true home, creating a welcoming and comforting environment for every family who walked through our doors. Her warmth and dedication touched countless families, and her kindness and impact will be deeply missed by all who knew her.

Scan the code to learn more:



To sign up to volunteer or ask questions, please contact Alyssa Francis at afrancis@rmhcomaha.org 402-346-9377 ext. 122.



Aly and Hannah spent the semester painting, organizing, and preparing welcome bags for our families



David Stovers serves at our front desk answering phone calls, collecting mail and checking in our volunteers



University of Nebraska Medical Center (UNMC) Physical Therapy and Occupational Therapy Students spent the morning helping with several tasks around the house



Creighton Medical Students managed stations at the Blackstone Open benefiting RMHC



Creighton Medical School Pediatrics Interest Group sorted our toy donations for each kid to choose from when they visit



Valmont helped in the kitchen by deep cleaning our family refrigerators and organizing our bookshelves



Warriors of Amazon visited for a house refresher



Custom Diesel Drivers Training processed our pop tab donations from the community

Gifts in-Kind



What's on Our Wish List?

We are always looking for:

- Breakfast or granola bars
- Grab and go snacks
- Boxed meals
- K-Cup coffee, creamer, sugar, etc.
- Liquid laundry detergent and dryer sheets
- Household cleaners and disinfectants
- Liquid hand soap
- Paper towels
- Batteries (AA and AAA)
- Feminine hygiene products
- Diapers (sizes 4 and 5)
- Ziploc bags (sandwich and gallon sized)
- Trash bags (4 and 13 gallon sized)
- Gift cards to local restaurants, gas stations, and grocery stores, etc.

Our donation areas:

- Cereal and pantry goods
- Brand new toys
- Household items
- Event supplies

You can always visit our wish list online to see what we need the most at any given time in the year.

Scan the code to learn more:



The House's wish list runs long.

Think of it this way—we often have nearly 100 people staying with us on a daily basis. That means we go through a lot of paper towels, laundry detergent, etc. To the left you will find a list of items, big and small, that we are always grateful to accept from our loving donors.



SammyStrong Foundation donates much-needed cleaning supplies



Creighton Men's Basketball Team



Van Meter Inc. assists with our annual toy drive



LRS Healthcare assists with stocking and cleaning The Tree House



UMNC Student Ambassadors create our little free library

"RMHC truly excels at providing comprehensive support for families during their stay, creating a home-away-from-home. Witnessing the kids' curiosity and enthusiasm during the installation was the highlight of the experience! Their smiles reminded us just how significant a small gesture can be."

UNMC Student Ambassadors

RMHC also accepts donations of services to help maintain our facility, grounds, and programs. These services include, but are not limited to:

- Lawn care
- Commercial cleaning: windows, carpet, flooring, etc.
- Hair care
- Maintenance
- Professional services: legal, human resources, mental health, etc.

Other Ways to Give

Honor Your Roots. Leave a Legacy. Grow Our Future.

Make your will today. It's about living your life the way you want, even after you're gone. It's about your loved ones, your legacy, and making sure your story unfolds just right. It doesn't matter how big or small your estate is—a will is for everyone.

And here's the best part: it's free and easy. With RMHC's new online partner FreeWill, it takes just 20 minutes to complete your will online—no lawyers, no stress. Life's too short not to protect what matters most.

Get started now. Your legacy awaits.

Change It Anytime, Because Life's a Journey

Things change. A will is a living document—just like your life, it can adapt. Anytime you want to update it, you can.

"Incorporating a planned gift in your will can provide significant tax advantages, including reduced estate taxes, while allowing you to support a cause you care about and maximize the inheritance for your loved ones."

Diana Novoselska, COO
Horsepower Today and
RMHC Board Member



The Blair Family and the Estate of Stanley M. Truhlsen Jr. honored their loved ones in a meaningful way, creating a lasting legacy of support for families in need. Through a bequest to RMHC you can create a profound impact on the lives of others.

A Tax-Savvy Way to Give and to Support Children in Need

Giving cash isn't the only way to help RMHC achieve our financial goals. Giving non-cash assets makes your impact go even further:



IRA

Make a tax-free donation from your IRA and meet your required minimum distribution.



Donor-Advised Fund (DAF)

DAFs make it simple to give money that was already set aside.



Stock

Give the gift of appreciated assets. You'll avoid capital gains tax on the securities you donate and receive an immediate tax deduction.



Crypto

Appreciated crypto can be up to 20% more valuable than donating cash.

Access the FreeWill online tools and resources by scanning the QR code or contact Kari Ketcham at kketcham@rmhcomaha.org or 402-346-9377 ext. 128. We'd love to speak to you about your giving opportunities and preferences.

Providing support to RMHC also results in tax savings for you. All of these options can be set up easily by scanning the QR code to access online tools and resources powered by FreeWill.

Our Leadership



LINDSEY RAI KORTAN
CHIEF EXECUTIVE OFFICER



TINA MOULTON
CHIEF OPERATING OFFICER



KARI KETCHAM
CHIEF DEVELOPMENT OFFICER



VICKY SHEELER
CHIEF PROGRAM OFFICER



EMILY MOZER
DIRECTOR OF CORPORATE GIVING



HUNTER SAMUELS
DIRECTOR OF STEWARDSHIP & COMMUNICATIONS



EMILY SWETT
EVENT & ENGAGEMENT MANAGER



MACKENZIE LEAHY
PROGRAM MANAGER



SYDNEY LEO
MARKETING & DEVELOPMENT COORDINATOR



ALYSSA FRANCIS
VOLUNTEER COORDINATOR



MACEAL PECHACEK
DAY PROGRAM COORDINATOR



JESSICA OLVERA
GUEST SERVICES TEAM



CHAKA SPEARMAN
GUEST SERVICES TEAM



ZARRINA KHUJAMUROTOVA
GUEST SERVICES TEAM



MICHELLE SWAN
GUEST SERVICES TEAM

Board of Directors

Jon A. Smith Board President
VETERAN HORIZONS LLC

Timothy McGill Past President
MCGILL RESTORATION

Dr. David Mercer, MD, PhD Past President
NEBRASKA MEDICINE/UNMC

Steve Nebbia Treasurer
LUTZ

Ama Bikoko
CDC FOUNDATION

Dr. Dan Connealy, MD, MBA
PERINATAL ASSOCIATES

Patty Bauer
METHODIST WOMEN'S HOSPITAL

Jason Lauritsen
THE CHECK-IN METHOD™

Shaun Speranza
VETERAN'S LAW JUDGE

Allison Malone
COBALT CREDIT UNION

"As we look to the increasing needs of pediatric care in Nebraska, our board is laser-focused on working with our fantastic team as we execute our strategy for the future needs of our families. We cannot do this without the continued generosity of the foundations, organizations, and individuals in our communities. Whether you have considered us in the past or are thinking of doing so in the future, where better to look than the future of our children and the well-being of their families; families, many of whom, are facing situations they never imagined. More pediatric families than ever need our help. Thank you in advance for your support!"

Jon A. Smith
RMHC Board President



scan to learn more



Ronald McDonald House Charities in Omaha

620 South 38th Avenue • Omaha, Nebraska 68105

402-346-9377 • rmhcomaha.org

